

**On-line and Off-line hotspot repair**



**Pumpable internal insulation**

The pumpable soluble fibre insulation is a mix of short fibres dispersed in high temperature binders which, upon drying, produces a strong insulation structure with low thermal conductivity

**Insulation technical details**

- Low thermal conductivity ( 600 °C - 0.09 W/mK)
- Use limit 1200 °C
- Melting point >1500 °C
- Wet density 1090kg/m<sup>3</sup>
- Dry density 270 kg/m<sup>3</sup>
- Low shrinkage
- Good adhesion
- Abrasive resistant to flue gas velocities up to 20 m/s

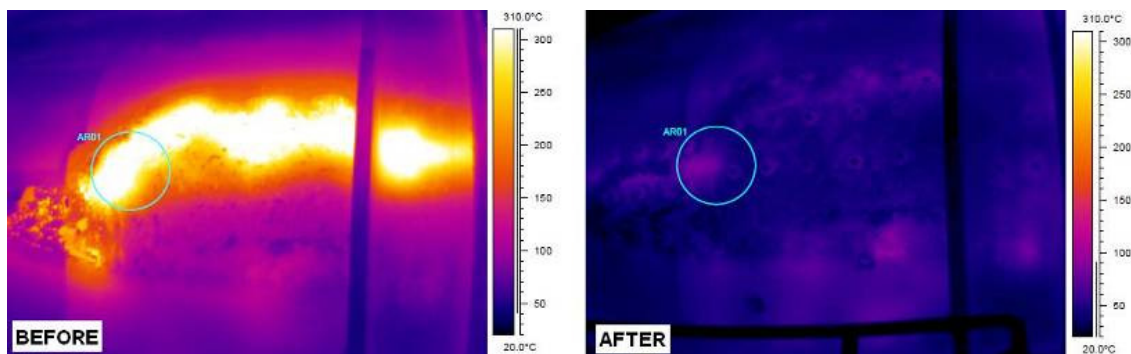
**Installation process step-by-step**



*Pictures showing pumpable mastic in 20kg shipping containers and pump working space*



*Pictures showing installation of coupling and caps and a field of seam connector pattern*



*Thermal Images of a duct casing before and after the repair*