

Paint Protective Coatings



Recently **INTECH Power Service** has partnered with **TRYTON Designs Ltd.** and **CHEMCO International** to offer our clients CCGT and OCGT Plants, Waste to Energy and Biomass Plants and Coal and Oil Fired Conventional Boiler Plants a complete **turn-key solution** for renovation of ductwork and support infrastructure which has started to corrode

Applications

• GT Inlet / Bell-mouth



DIB completed



First layer of primer and paint completed



All paint coatings been applied

• Filter House



DIB completed



First layer of primer and paint completed



All paint coatings been applied

• HRSG Duct



DIB completed



First layer of primer and paint completed



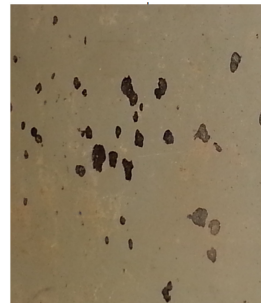
All paint coatings been applied

The Solution in Detail

- An initial survey and report of findings offered by INTECH
- TRYTON Designs with a wealth of knowledge for extending the economic life of plant and equipment will carry out the preparation of affected surfaces and the application of Chemco's high quality glass-flake products
- Minimal, less damaging, surfaces preparation methods are used in sensitive areas
- Preparation consist of Dry Ice Blast (DIB) the floors to remove the damaged coating and corrosion to reveal a clean and sound undercoating (except where there was corrosion damage) followed by sweeping and vacuuming to remove any debris and let it dry out. Depending on the location of work the areas are screened and isolated by erecting sheeting. Sometimes extraction fans are also put in place to ensure that there is no build-up of CO2 during DIB



DIB cleaned surface



Close up of the DIB surface (cleaned
corrosion spots)

- Followed by preparation and application of several coating of a hard wearing, impervious and chemical resistant layer of Chemcos' primer and paint. The type of paint varies in accordance with the environment conditions (temp, corrosive media, humid environment etc...)
- Chemco's unique paint products, so that the manufacturer's warranties are met
- Project management and supervision are offered, ensuring all work is carried out to manufacturer's specifications

Paint coatings' features

- Unique coating products aimed at solving the most difficult corrosion, erosion and chemical attack problems faced by industry
- Better health and safety outcomes
- Lower costs and quicker return to service
- Chemco's high quality glass-flake products are solvent free and can be applied wet or on corroded surfaces (underwater concrete or high temperature flue linings)